

KAUAI, LANAI, & THE BIG ISLAND

INCENTIVE TRAVEL GUIDE

A PUBLICATION OF
BRIGHTSPOT

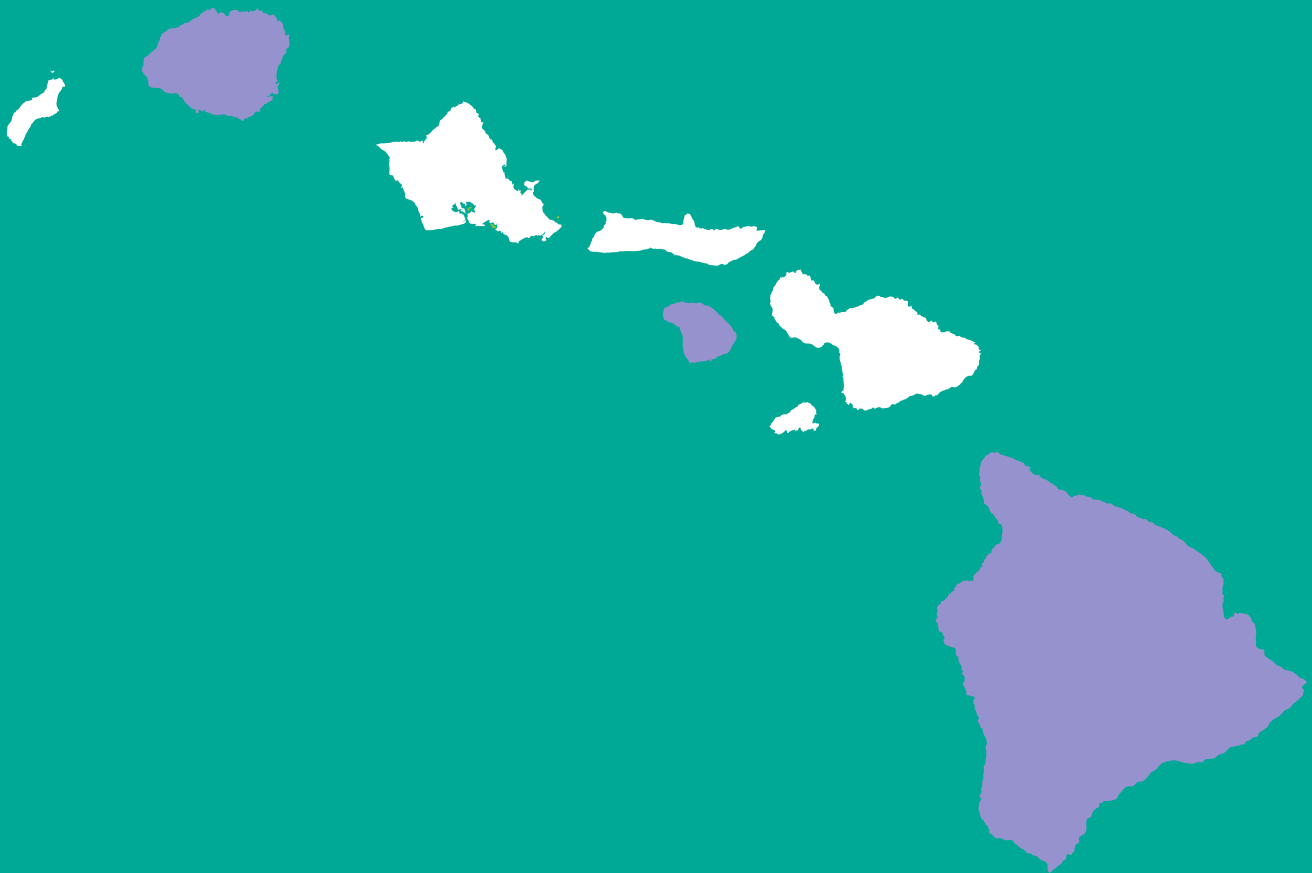


TABLE OF CONTENTS

KAUAI INTRO

Kauai Hotels

Grand Hyatt Kauai Resort & Spa

Koa Kea Hotel & Resort

St. Regis Princeville Resort

Kauai Activities

BIG ISLAND INTRO

Big Island Hotels

Fairmont Orchid, Hawaii

Four Seasons Hualalai at Historic Kaupulehu

Hilton Waikoloa Village

Mauna Lani Bay Hotel & Bungalows

The Mauna Kea Beach Hotel

Waikoloa Beach Marriott Resort & Spa

Big Island Activities

LANAI INTRO

Lanai Hotels

Four Seasons Resort Lanai, The Lodge at Koelei

Four Seasons Resort Lanai at Manele Bay

Lanai Activities

COMMENTARY

ISLAND EXPERIENCES

KAUAI

ONCE YOU VISIT KAUAI, YOU'LL QUICKLY UNDERSTAND WHY IT IS OFTEN REFERRED TO AS 'THE GARDEN ISLE.'

Largely undeveloped, Kauai is saturated with undisturbed rainforests, towering waterfalls, and a vast range of native wildlife. Hollywood has come calling countless times to take advantage of the striking natural beauty that can't be found on the mainland. Jurassic Park, Raiders of the Lost Ark, and Avatar are just a few of the movies shot on sight.

The island is home to three exceptional, first-class resorts: The St. Regis Princeville Resort, the Grand Hyatt Kauai Resort & Spa, and the recently opened Koa Kea Hotel & Resort at Poipu Beach. Because so much of the island is non-commercial, each of these resorts has gone to great lengths to offer exceptional luxury and privacy along the Napali coastline.

If you're seeking outdoor adventure for your group, Kauai is the perfect choice. Kayaking the Wailua River, snorkeling along Poipu Beach, or rafting through the many sea caves are always favorites. Hiking, zip lining through lush forests, and taking a helicopter tour over Waimea Canyon, the "Grand Canyon of the Pacific," are also extremely popular.



FUN FACT

Kauai's building code dictates that "no building shall be taller than a Coconut Palm".



THE GARDEN ISLAND

.....

LANDMARK

Waimea Canyon, known as the "Grand Canyon of the Pacific"

.....

#1 ACTIVITY

Exploring the Na Pali Coast

.....

FUN FACT

More than 60 Hollywood movies have been filmed here, including Jurassic Park, Raiders of the Lost Ark, and Avatar.

.....

RECOMMENDATION FOR GROUPS

Best for adventures.



KAUAI

KAUAI HOTELS



GRAND HYATT KAUAI RESORT & SPA

The Grand Hyatt Kauai is one of the star attractions of the beautiful beaches of Poipu. Known for its lavish grounds and gardens and pristine lagoons, the resort is a favorite of many. The 602 guestrooms and suites all feature gorgeous views of the ocean, gardens, or pools. The Grand Hyatt Kauai Spa offers a full menu of pampering and specialty treatments.

The restaurants of the Grand Hyatt Kauai are popular and varied, offering a traditional grill menu, Italian cuisine, and the always well-received Grand Hyatt Kauai Luau which takes guests through the Polynesian history and the celebration of its culture. Performers interact with diners tableside. Additional activities offered by the hotel are tours of Moir Gardens, shopping at nearby Poipu Shopping Village, and trips to Shipwreck Beach.



MEETING PLANNER TIP

This is a popular choice for groups. Located on the sunny side of island, it has a large beach with big, crashing waves. The pool is massive, so your group can spread out. The swimmable saltwater lagoon and landscaping are equally stunning.

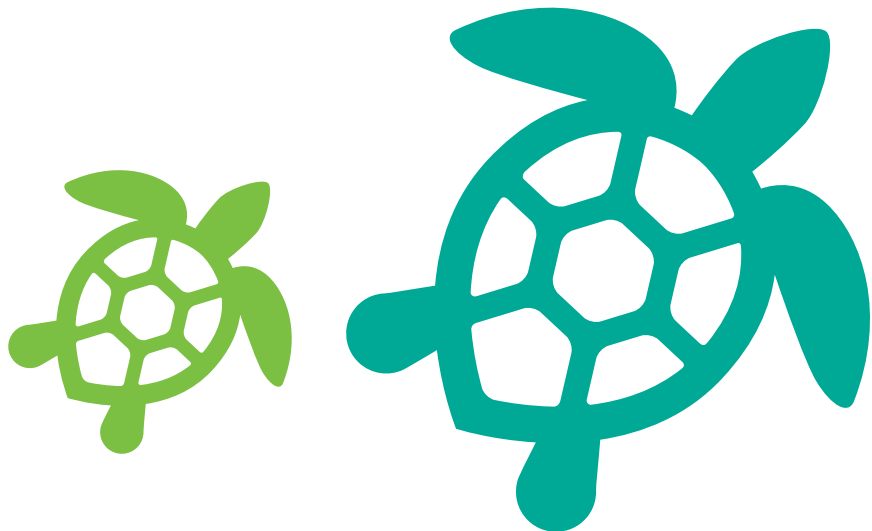
KAUAI HOTELS



KOA KEA HOTEL & RESORT

The southern shores of Kauai is home to the Koa Kea Hotel & Resort, a 121-room boutique hotel. The exceptional beaches of Poipu Beach are just one of the reasons it is considered one of top resorts of Kauai. Opened in 2009, the Koa Kea has become especially well known for its Red Salt restaurant which presents a diverse menu against the backdrop of a stellar view of the Pacific Ocean. The fusion of contemporary simplicity and authentic Hawaiian comfort provides guests with an exceptional intimate and enjoyable experience.

Though smaller than the mega-resorts, the Koa Kea is ideally located close to many activities such as biking and hiking in and around the Waimea Canyon, helicopter tours of the island, and golfing at any of Kauai's 12 golf courses.



KAUAI HOTELS



ST. REGIS PRINCEVILLE RESORT

The St. Regis Princeville Resort is an amazing blend of five-star elegance and Hawaiian hospitality. Located on the exclusive North Shore of Kauai, the hotel has 251 guest rooms and is a tropical oasis in the middle of astounding natural beauty. There are lots of activities for guests to choose from including the Napali Snorkeling Adventure, the Jungle Valley Adventure, Tidepool Explorations, and Hanalei Star Gazing. The nearby Princeville Ranch Adventures also offer zip lining, kayaking, and hiking along the 2,500 acres of private land along the North Shore. The renowned Makai Golf Club provides challenging obstacles and picturesque scenery.

The St. Regis is also well known among guests for its eclectic cuisine, featured in the property's five-star restaurant. Locally sourced crops are reflected on the restaurants' menus each day.



MEETING PLANNER TIP

95% of rooms have ocean views, so your entire group feels like a VIP. They will enjoy postcard-perfect views of picturesque Hanalei Bay with the "Bali Hai" mountains for a backdrop (from the movie South Pacific). Lots of fantastic and unique activities are nearby: hiking the Napali coast, Waimea Canyon helicopter tours, and oceanview golfing.



KAUAI

KAUAI ACTIVITIES



NAPALI COAST ZODIAC RAFT RIDE

Rafters are sure to be exhilarated on this white-knuckle ride along the rugged Napali Coast as they take in amazing views of sea life, waterfalls, and 3,000-foot cliffs and pinnacles.



HIKING KALIHAIWAI FALLS

When you ascend the "Green Hill" of the Kalihiwai Falls region, you are treated to breathtaking mountain and ocean views. Hikers take in both the lowland rainforest of the Kalihiwai Valley before trekking to the spectacular five-tiered Kalihiwai Falls. Hearty souls can continue up the valley to a second, idyllic waterfall and swimming area, perfect for a picnic lunch.



TUBING ADVENTURE

This amazing adventure will take you onto the private lands of the Lihue Sugar Plantation via an oversized inner tube and traveling down a 140-year-old irrigation canal. As you meander through the open ditches, past overhanging foliage, and through five dark and mysterious tunnels, you'll enjoy a leisurely one-hour float over two miles of tropical waterways.

KAUAI ACTIVITIES



MUD BUG WATERFALL TOUR

These tours combine the beautiful scenery of mountain and coastline views with the adventure of tackling rugged terrain through winding trails and thick vegetation. The reward is the opportunity to enjoy rope swings and swimming hole locations inaccessible to the public.



KOLOA ZIPLINE ADVENTURE

The beauty of this Grove Farms area is the highlight of this adventure. The eight-line course is Kauai's longest zipline, traveling over 2,000 feet and across the largest inland body of water in Hawaii.



ZIP AND DIP

The 'Zip and Dip' experience is an incredible adventure combining nine picturesque zipline crossings, a suspension bridge, and a stop atop an idyllic waterfall swimming hole for lunch and more fun.

KAUAI ACTIVITIES



HELICOPTER FLIGHT DELUXE

This flight will take you over a world of lush tropical rainforests, jagged mountains, sea cliffs, beaches, and craters including the Mount Waialeale (weather permitting) crater. Soar above the Waimea Canyon and see countless waterfalls, some falling over 2,000 feet.



KAYAK & HIDDEN VALLEY FALLS

The beautiful and secluded waterways of Hidden Valley Falls take kayakers downstream almost two miles through the Huleia National Wildlife Refuge, home to many of the rare and endangered Hawaiian water birds. Visitors will also pass the Alekoko, the Menehune Fishpond, a wonderful example of the ancient Hawaiian fishing and aquaculture.



THE BIG ISLAND

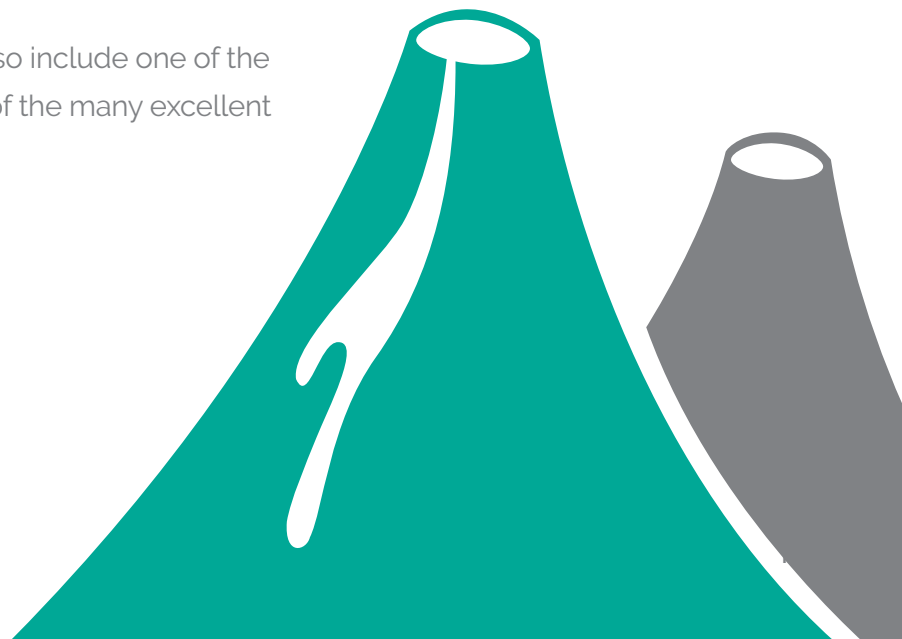
THIS SINGLE ISLAND IS ACTUALLY NAMED “HAWAII,” BUT MOST FREQUENTLY, IT’S REFERRED TO AS ‘THE BIG ISLAND’ BY THE LOCALS.

This came about for two reasons: not only is it the largest in terms of land mass of all the Hawaiian islands, but it actually grows in size by approximately 100 acres every year. This happens when molten magma from the nearby Kilauea volcano collides with the cooling waters of the Pacific and adds a stretch of black lava along the coastline.

Resort options are plentiful here and include Four Seasons Resort Hualalai at Historic Kaupulehu; The Fairmont Orchid, Hawaii; Mauna Lani Hotel & Bungalows; Mauna Kea Beach Hotel, Hawaii Island; Waikoloa Beach Marriott Resort and Spa; and the Hilton Waikoloa Village.

Eleven of 13 climate zones exist here – such as tropical rainforests, volcanic deserts, sunny black sand beaches, and even a snow capped mountaintop. Natural wonders can be experienced in the form of active volcanos, extensive marine life, and different colored sand – white, black, and even green! Probably the most striking scenery on the island are the finely manicured golf courses set against the jagged, black lava landscape. It’s a beautiful example of refinement and nature side by side. In addition to the many fine courses, Dolphin Quest makes its home here and is extremely popular with all age groups.

Any trip to The Big Island should also include one of the highly rated sunset cruises or one of the many excellent luaus.



BIG ISLAND



THE BIG ISLAND

LANDMARK	Kilauea Volcano
#1 ACTIVITY	Hawaii Volcanoes National Park
FUN FACT	11 of 13 world's climate zones are here, from tropical rainforest to volcanic desert to polar tundra, due to the shielding elevations of Mauna Kea and Mauna Loa.
RECOMMENDATION FOR GROUPS	Most diverse natural activities – check off your bucket list: "see volcano".



BIG ISLAND

BIG ISLAND HOTELS



FAIRMONT ORCHID, HAWAII

The Fairmont Orchid, on the beautiful Kohala Coast, is a 32-acre luxury oceanfront property that draws its name and inspiration from the natural blooms of Hawaii. Relaxation goes to a new level whether it's on the sugary-sands of the hotel lagoon or the hotel's one-of-a-kind "Spa Without Walls" which includes waterfall massage huts and lovely oceanfront treatment cabanas. The 10,000 square foot oceanfront pool and 36-hole golf course also treat guests to relaxation and activity.



MEETING PLANNER TIP

Overall, it's a great incentive destination with a secluded feel. The lagoon is serene. Much of the beach has chunky lava rocks for an attractive scene. It's a fresh scene from the typical long, sandy beach. The sleeping rooms are spacious and have been renovated recently. What really stands out is the peaceful feeling. It won't disappoint.

BIG ISLAND HOTELS



FOUR SEASONS HUALALAI AT HISTORIC KAUPULEHU

The Four Seasons Hualalai falls into a class all its own, catering to elite travelers and groups alike. Frequently rated #1 in Hawaii and Top 5 in North America among resorts, the Four Seasons can accommodate the exacting requests of veteran globetrotters. History buffs will particularly enjoy the presentations of the Kaupulehu Cultural Center as they showcase the traditions of old Hawaii, taking guests back in time.

One of the most unique snorkeling experiences of the islands is available on the hotel property at the King's Pond where you can swim amongst more than 3,000 tropical fish in the 1.8-million gallon aquarium carved out of natural lava rock. Whether groups prefer basking in the tranquility of the grounds or seeking adventures, their reality will far exceed their expectations.



MEETING PLANNER TIP

If your group has a good budget, Hualalai should be the top of your list. The two-story bungalow buildings and perfect landscaping create a true Aloha ambience. Comfy beach beds are plentiful. Nice walking paths along the beach offer frequent turtle sightings.

BIG ISLAND HOTELS



HILTON WAIKOLOA VILLAGE

As the largest resort in the Kailua-Kona area, the Hilton Waikoloa Village covers an astonishing 62 acres of oceanfront property. The hotel is known for being exceptionally family-friendly and packed with fun for everyone. The resort is designed to be a self-contained village complete with an ocean-fed lagoon, three pools, 14 unique restaurants and bars, two championship golf courses, a swim-with-the-dolphins experience, and plenty of on-site shopping. Guests can travel the property via the canal on mahogany boats or on air-conditioned trams.

Rooms and public areas are filled with more than 1,800 pieces of artwork, all showing the Asian, Western, and Oceanic cultures so prevalent in Hawaiian history. As an added bit of excitement, exotic and native wildlife is frequently seen roaming the vast grounds.



MEETING PLANNER TIP

Multiple towers for rooms – Lagoon tower is the newest and nicest with smaller rooms; Ocean tower has larger rooms. Lots of on-resort activities. Nice shopping plazas are nearby. Kings' Shops are high end, and Queens' shops are midscale. Both have good restaurants too.

BIG ISLAND HOTELS



MAUNA LANI BAY HOTEL & BUNGALOWS

The Mauna Lani sets itself apart from other traditional resorts in several unique and attractive ways. First, the resort is widely acclaimed for generating more solar power than any other resort in the world. Secondly, the hotel is deeply committed to preserving and enhancing the cultural history of Hawaii. As part of this commitment, they have been nationally recognized for their tremendously successful honu programs, cultural activities, and efforts to maintain plant life and historic fishponds indigenous to the area.

In addition to the traditional activities available to guests, they also offer hula and ukulele lessons, historical tours, and beach volleyball.



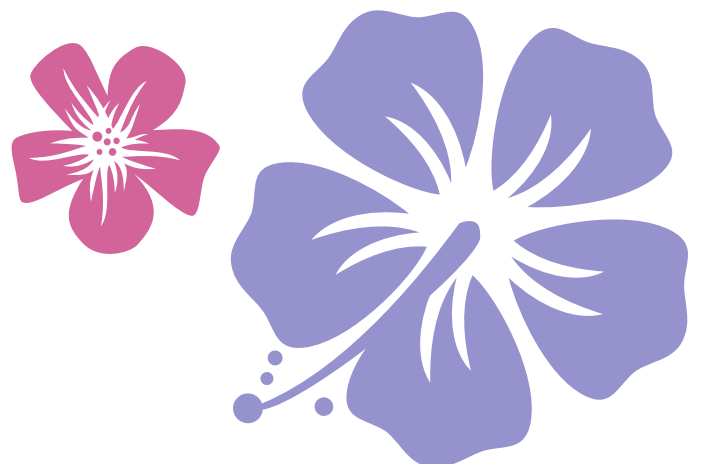
BIG ISLAND HOTELS



THE MAUNA KEA BEACH HOTEL

Founded by Laurance S. Rockefeller in 1965, the Mauna Kea continues to display the understated elegance of its early days. After a multimillion-dollar renovation, the resort has once again regained its title as “a landmark of luxury on the Big Island.” The original design was intended to harmonize with the beautiful surroundings of the island with special attention paid to the resort's secluded beaches alongside Kaunaoa Bay and Hapuna Beach. The snow-capped Mauna Kea serves as the hotel's backdrop.

The hotel displays an impressive collection of over 1,600 pieces of Pacific and Asian art throughout the property. A collection of fine dining restaurants and gracious guestrooms with modern features delight their guests.



BIG ISLAND HOTELS



WAIKOLOA BEACH MARRIOTT RESORT & SPA

The Waikoloa Beach Marriott is a beautiful beachfront property, conveniently located within easy walking distance of premiere shopping, excellent dining, golf courses, and a full host of ocean activities. The resort spans 15-acres of Anaehoomalu Bay beachfront property. A tour of the hotel's immaculate grounds will lead guests past ancient and beautiful fishponds to the escape of the only naturally sheltered beach in all of Hawaii.





BIG ISLAND

BIG ISLAND ACTIVITIES



VOLCANOES NATIONAL PARK

This is sure to be a bucket list experience for many – to see an active and flowing volcano in person. Don't worry; it's from a safe distance!



VOLCANOES NATIONAL PARK + WATERFALL EXPLORER

This tour covers everything that makes the Big Island so very unique: volcanoes and waterfalls. You will explore Mauna Loa and Mauna Kea, the two largest volcanoes on the island on your way to the famous Rainbow Falls and the quaint town Hilo, the site of two devastating tsunamis.



HELICOPTER OVER THE KOHALA COAST

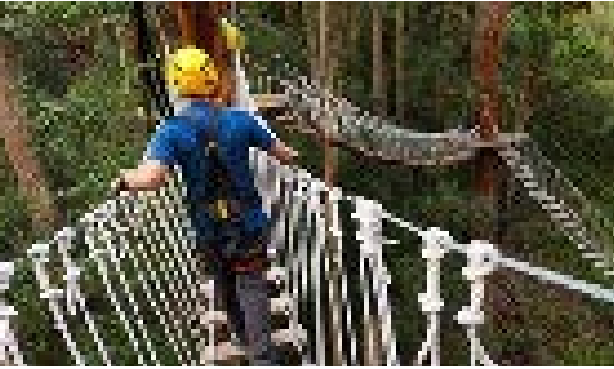
Tour what many consider to be the most spectacular scenery on the Big Island as you take in the Kohala Coast's scenic valleys and beautiful waterfalls.



HORSEBACK RIDING ON DAHANA RANCH

Riding on Dahana, you get the true feeling of the open range on the emerald foothills of Mauna Kea. In this wide and open terrain, you trot, canter, and gallop on lush hills dotted by cattle and horses.

BIG ISLAND ACTIVITIES



ZIPLINE CANOPY ADVENTURE

Perched among the trees of Halawa, the Kohala Canopy Adventure features elevated suspension bridges, soaring tree platforms, and thrilling ziplines through the lush rainforests.



DOLPHIN OCEAN SWIM

The Dolphin Ocean Swim is unlike any other dolphin experience. Swimming with these wild and free dolphins in the open ocean is something you will remember forever. Dolphins are among the most amazingly intelligent creatures in their natural habitat is an amazing experience.



WAIPO VALLEY ATV RIM TOUR

This is a get-as-dirty-as-you-want ATV tour, specializing in those with no ATV (all-terrain vehicle) experience. You'll explore pastures, private and unpaved roads, and rocky trails on your own ATV, no experience necessary!

BIG ISLAND ACTIVITIES



ZODIAC RAFTING

Explore the Kona coastline in a 16-passenger Zodiac raft. This 23-foot, inflatable craft will give you an exciting thrill ride as you break through whitecap waves. Your captain will maneuver sharply around rocky outcroppings and jutting cliffs while you search for dolphins, manta rays, and sea turtles.



SEA ROCKET SNORKEL CRUISE

Enjoy a beautiful day cruising and snorkeling off the South Kona Coast where a remote and thriving underwater wilderness awaits you. Here you'll look for sea turtles, whales, dolphins, mantas, and endless schools of exotic fish swimming among the coral reefs and arches as you zoom in for a closer look using a sea rocket.



SNORKEL SAILING

Anaeho'omalū, known as "A Bay," is one of the island's most beautiful beaches. The sand is a salt and pepper mix of coral and volcanic rock. Here, you'll see frolicking dolphins, endangered sea turtles, and thousands of brilliant-colored fish darting among the elaborate coral gardens.



OTHER BIG ISLAND ACTIVITIES:

- Ironman Bike Tour
- Horseback Cattle Drive
- Hike and Swim Kohala Falls

LANAI

AS THE LEAST DEVELOPED OF THE HAWAIIAN ISLANDS, LANAI IS THE PERFECT RETREAT IF YOU'RE SEEKING TRANQUILITY AND RESPITE FOR YOUR GROUP.

This largely undiscovered gem has just enough exceptional development to make it worth the little bit of effort it takes to get there.

There are multiple flights arriving from Honolulu daily, or the high-speed ferry from nearby Maui is a unique way for groups to arrive. The island is home to the unbelievable beauty of two Four Seasons resorts—one housing traditional guest rooms, the other offering bungalows. Both the Four Seasons Resort Lanai at Manele Bay and the Four Seasons Resort Lanai, The Lodge at Koele, offer exceptional accommodations, immaculate grounds, and fine dining. These locations cannot be beat for luxury and seclusion from the faster pace of the other islands.

Though future development is almost a certainty as Oracle CEO Larry Ellison recently purchased 98% of this tropical paradise, the resorts currently on this exclusive island are truly world class.



LANAI



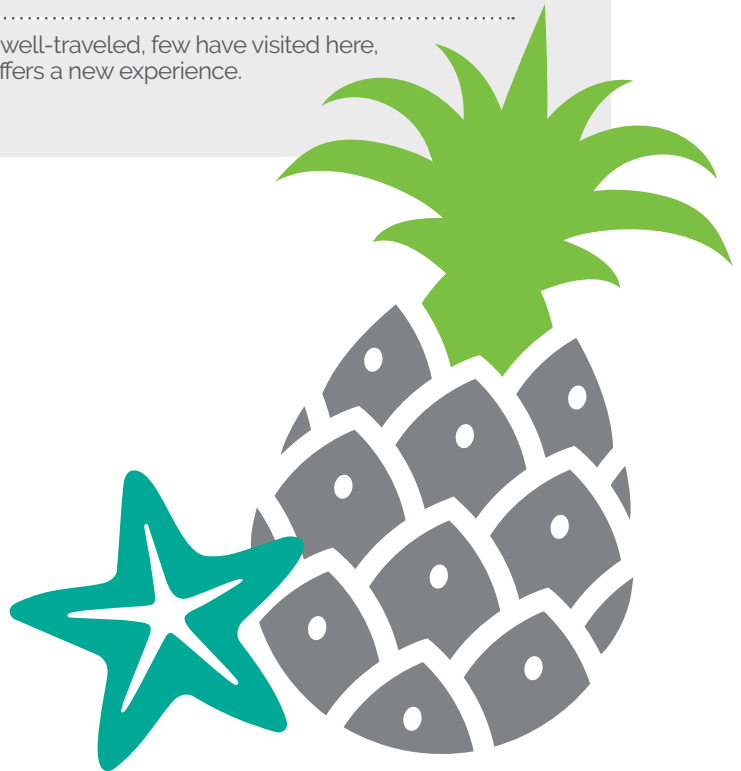
SECLUDED ISLAND (WAS PINEAPPLE ISLAND)

LANDMARK Luahiwa Petroglyphs

#1 ACTIVITY Munro Trail

FUN FACT The entire island of Lanai was rented out in 1994 by Bill Gates for his wedding.

RECOMMENDATION FOR GROUPS If group is well-traveled, few have visited here, so Lanai offers a new experience.





LANAI

LANAI HOTELS



FOUR SEASONS RESORT LANAI, THE LODGE AT KOELEI

The Lodge at Koele is one of the most frequently top-rated Four Seasons Resorts. The rustic country feel set in breathtaking scenery is a guest favorite. In addition to the traditionally popular water and beach activities, the slightly cooler upcountry weather makes this location ideal for golfing and horseback riding. Access to its sister property at Manele Bay is available via a free shuttle. This amazing resort allows guests to experience the quality and service of a smaller, more intimate resort with access to the amenities of a larger one.

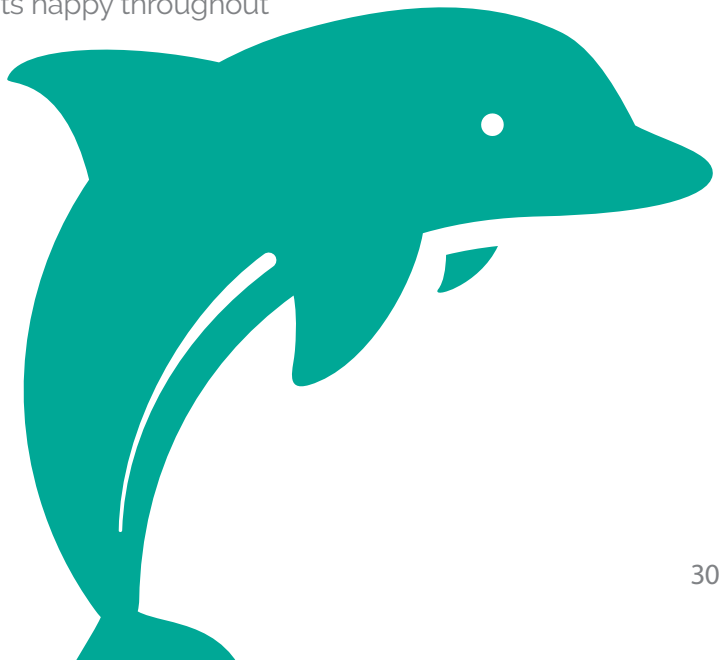
LANAI HOTELS



FOUR SEASONS RESORT LANAI AT MANELE BAY

The Four Seasons Resort Lanai at Manele Bay is a luxurious oceanfront resort that sits along a secluded location by the white-sands of Hulopo'e Beach. Guests do not have to be golf enthusiasts in order to appreciate the Jack Nicklaus-designed golf course, which embraces the ocean views, mountain vistas, and wooded slopes surrounding the area. It's so beautiful that Bill & Melinda Gates were married on the famous 17th hole in 1994.

The marine reserve along the resort allows guests great snorkeling waters and frequent dolphin sightings. Also, a complimentary shuttle permits guests to venture out into Lanai City, offering a few additional options for entertainment, shopping and dining. Nevertheless, the pristine pool, spa, activity options, and great service amongst other things is sure to keep guests happy throughout their stay.





LANAI

LANAI ACTIVITIES



MANELE GOLF COURSE

High above the crashing surf of Hulopoe Bay, the Jack Nicklaus Signature Golf Course is the premier 18-hole layout in Lanai. Built on lava outcroppings, the course has a reputation for excellence in design and playability and features three holes on cliffs and the ultimate water hazard – the Pacific Ocean.



LUAHIWA PETROGLYPHS

These ancient rock carvings of animals and people of times past are distinguished as some of the best-preserved petroglyphs on Lanai. The only way to reach these pieces of preserved history is to travel a steep dirt road, only accessible in a four-wheel drive vehicle.



OFF ROAD ADVENTURES

This guided tour gives you the opportunity to experience Lanai's most spectacular and isolated scenery. At the Garden of the Gods you see the rainbow-hued landscape and unusual rock formations. A stroll along the secluded Shipwreck Beach to see ancient petroglyphs is followed by a tour of the Munro Trail, a six-foot wide ridge named for Hawaiian naturalist and former ranch manager, George Munro. This trail is part of the only mountain range on the island which stretches to a 3,400-foot elevation.

LANAI ACTIVITIES



KAILOHIIA (SHIPWRECK BEACH)

To reach this windy, 8-mile stretch of beach, you'll have to travel by four-wheel drive approximately half and hour north from Lanai City. Once at Kaiolohia, you can see numerous shipwrecked vessels that succumbed to the shallow, rocky channel. There even remains the hull of a ghostly oil tanker, circa 1940, on the beach's coral reef, adding to the beach's surreal sense of wonder.



GARDEN OF THE GODS

Also known as Keahiakawelo, the Garden of the Gods is an otherworldly rock garden at the end of rocky Polihua Road. Located approximately 45 minutes from Lanai City on the northwest side of the island, this lunar-type topography features unusual and imaginative rock formations and stone towers.

BRIGHTSPOT COMMENTARY

Ask most people their dream of the ideal vacation and you'll likely hear mentions of three must-haves: tropical beaches, one-of-a-kind opportunities for adventure, and fabulous dining options. Corporate meeting planners and incentive travel attendees have the same goal.

Few places in the world can not only meet, but so expertly surpass, these qualifications like the Hawaiian Islands. Fewer still are as extremely well-suited for group travel as The Aloha State. With a vast and unique range of outstanding accommodations, an endless array of activities, and mile-upon-mile of pristine beaches, an escape to the islands of Hawaii can offer the thrill of a lifetime to incentive travelers.

There are many good reasons, that year after year the readers of Travel + Leisure, Conde Nast Traveler, and TripAdvisor rank Hawaii as their top choice for vacationing: that's because whatever your pleasure (or that of your group), the many and varied islands of Hawaii can fulfill any agenda, meet any need.



TRAVEL + LEISURE

TOP 10 ISLANDS IN THE WORLD

.....
Maui #2
.....
✓ Kauai #3
.....
✓ Big Island #4
.....
Oahu #6



CONDE NAST TRAVELER

TOP ISLANDS IN THE WORLD

.....
Maui #3
.....
✓ Kauai #4
.....
✓ Big Island #10
.....
Oahu #16

Collectively, the islands embody the Aloha spirit - that gracious acceptance and warm welcome extended to all who visit; individually, each island is known for its own distinct personality and unique attractions that set it apart. Catering to groups is the specialty of the world-class resorts that dot the islands. All were originally designed to accommodate groups and their unique needs.

So, whether your team is seasoned travelers looking for unique, never-been-done-before experiences or they're relative newcomers to the rewards of incentive travel, each and every trip to Hawaii can offer new sights, adventures, and memories for everyone.

When Hawaii is in the meeting or incentive plans, it's amazing how work becomes so



BRIGHTSPOT RECOMMENDATION



Visit a different Hawaiian island every 3 years. for

Incentive Pro: "How about Hawaii for the next President's Club Trip?"

Client: "Hmm. We've been to Maui. We don't want to go to the same place."

Incentive Pro: "Here's something to think about. Every Hawaiian island offers a vastly different experience. No two are alike. You've not seen all Hawaii after one visit."

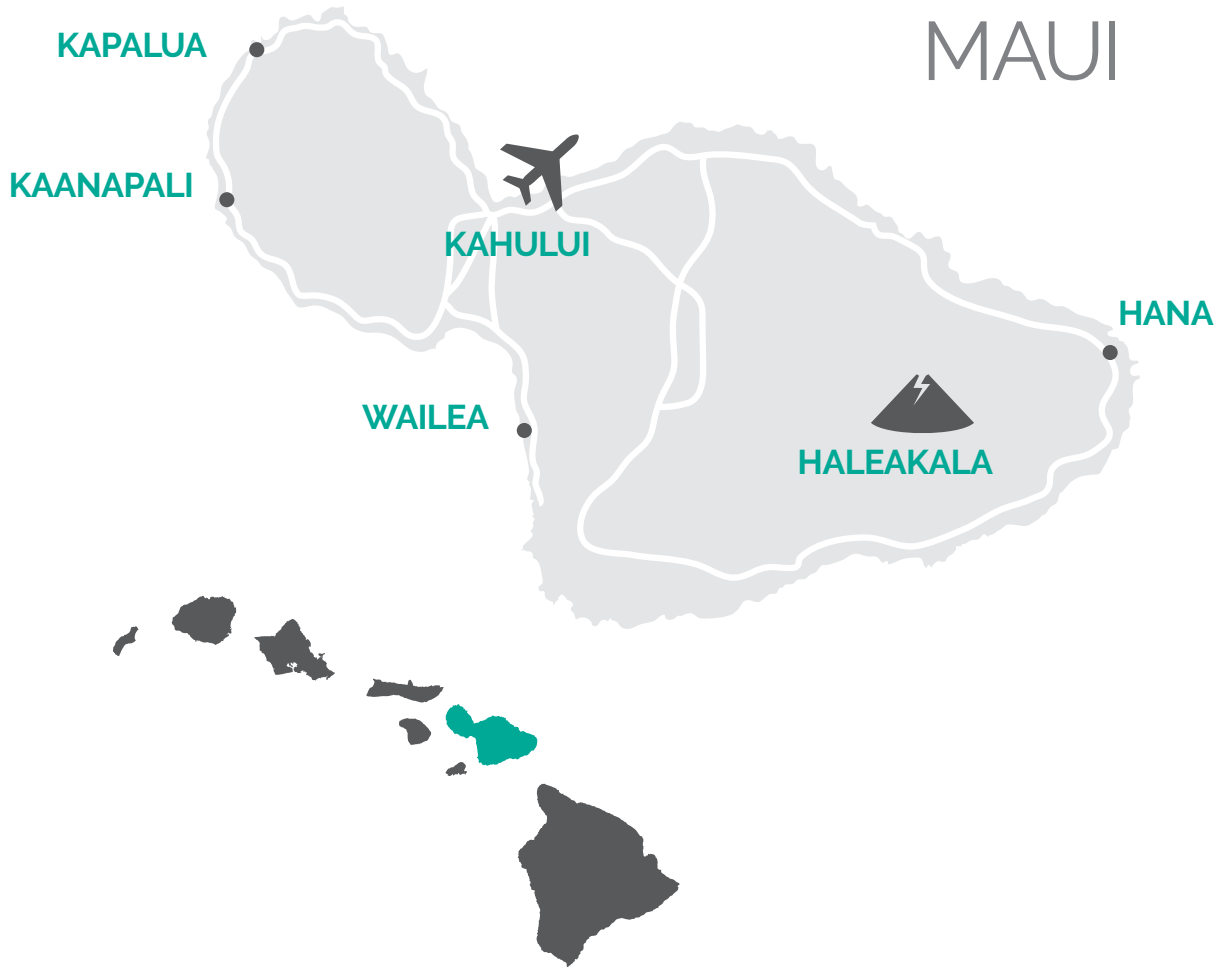




ISLAND

MAUI

Start here - take your meeting or incentive trip here first.



THE VALLEY ISLE

LANDMARK	Haleakala, the largest dormant volcano crater in the world
#1 ACTIVITY	Sunrise at Haleakala and biking down mountain
FUN FACT	The largest Banyan tree in the world is found in Lahaina. Originally planted as an 8 foot tree in 1873, it spread to an entire acre.
RECOMMENDATION FOR GROUPS	Start here – take your meeting or incentive trip here first.

OAHU

Most walkable options for free time activities or lower budget.

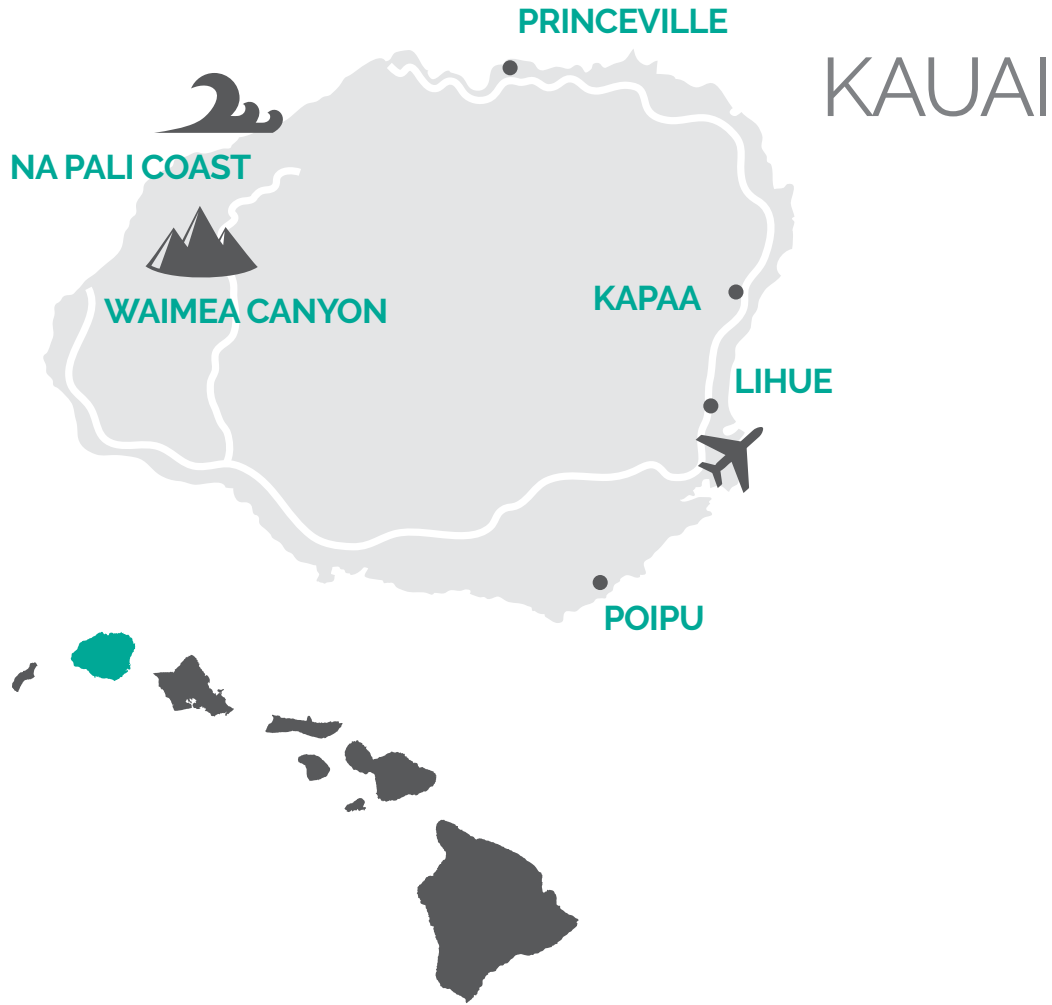


THE GATHERING PLACE

LANDMARK	Waikiki
#1 ACTIVITY	Pearl Harbor & USS Arizona
FUN FACT	Iolani Palace, located in downtown Honolulu, is the only Royal Palace in the USA.
RECOMMENDATION FOR GROUPS	Most walkable options for free time activities or lower budget.

KAUAI

Best for adventures.



THE GARDEN ISLAND

LANDMARK	Waimea Canyon, known as the "Grand Canyon of the Pacific"
#1 ACTIVITY	Exploring the Na Pali Coast
FUN FACT	More than 60 Hollywood movies have been filmed here, including Jurassic Park, Raiders of the Lost Ark, and Avatar.
RECOMMENDATION FOR GROUPS	Best for adventures.

BIG ISLAND

Most diverse natural activities – check off your bucket list: “see volcano”.



THE BIG ISLAND

LANDMARK

Kilauea Volcano

#1 ACTIVITY

Hawaii Volcanoes National Park

FUN FACT

11 of 13 world's climate zones are here, from tropical rainforest to volcanic desert to polar tundra, due to the shielding elevations of Mauna Kea and Mauna Loa.

RECOMMENDATION FOR GROUPS

Most diverse natural activities – check off your bucket list: “see volcano”.

LANAI

If group is well-traveled, few have visited here, so Lanai offers a new experience.

LANAI



SECLUDED ISLAND WAS PINEAPPLE ISLAND

LANDMARK Luahiwa Petroglyphs

#1 ACTIVITY Munro Trail

FUN FACT The entire island of Lanai was rented out in 1994 by Bill Gates for his wedding.

RECOMMENDATION FOR GROUPS If group is well-traveled, few have visited here, so Lanai offers a new experience.

ABOUT BRIGHTSPOT

Brightspot manages full-service meetings & events, incentive & recognition programs, and employee engagement campaigns for enterprise clients - with incomparable creativity, flexibility, and commitment to deliver results. Meetings & Conventions magazine recognized Brightspot as one of the Best Places to Work in the Meetings Industry, and Incentive Magazine has awarded its Motivation Masters award to Brightspot client programs.

INTERESTED IN LEARNING MORE? COME SEE US!



DISCLOSURE:

Please use this information freely to benefit you and your company! All we ask is that you cite Brightspot, and please consider us when you evaluate incentive program agencies.

Brightspot
102 Decker Court, Suite 150
Irving, TX 75062
972.661.6000

www.gobrightspot.com

